

SAPPHIRE GEMFIELDS TREASURE TRAIL

\$1

START YOUR ADVENTURE OF A LIFETIME

Experience the treasures
found in this unique part
of Queensland

HERE YOU CAN DISCOVER

- Sapphires -
Qld's State Gem
- Rich History
- Ancient Geology
- Colourful Characters
- Fossicking Areas
- Wetland Walks
- Augmented Reality
- Geo-cache Activity

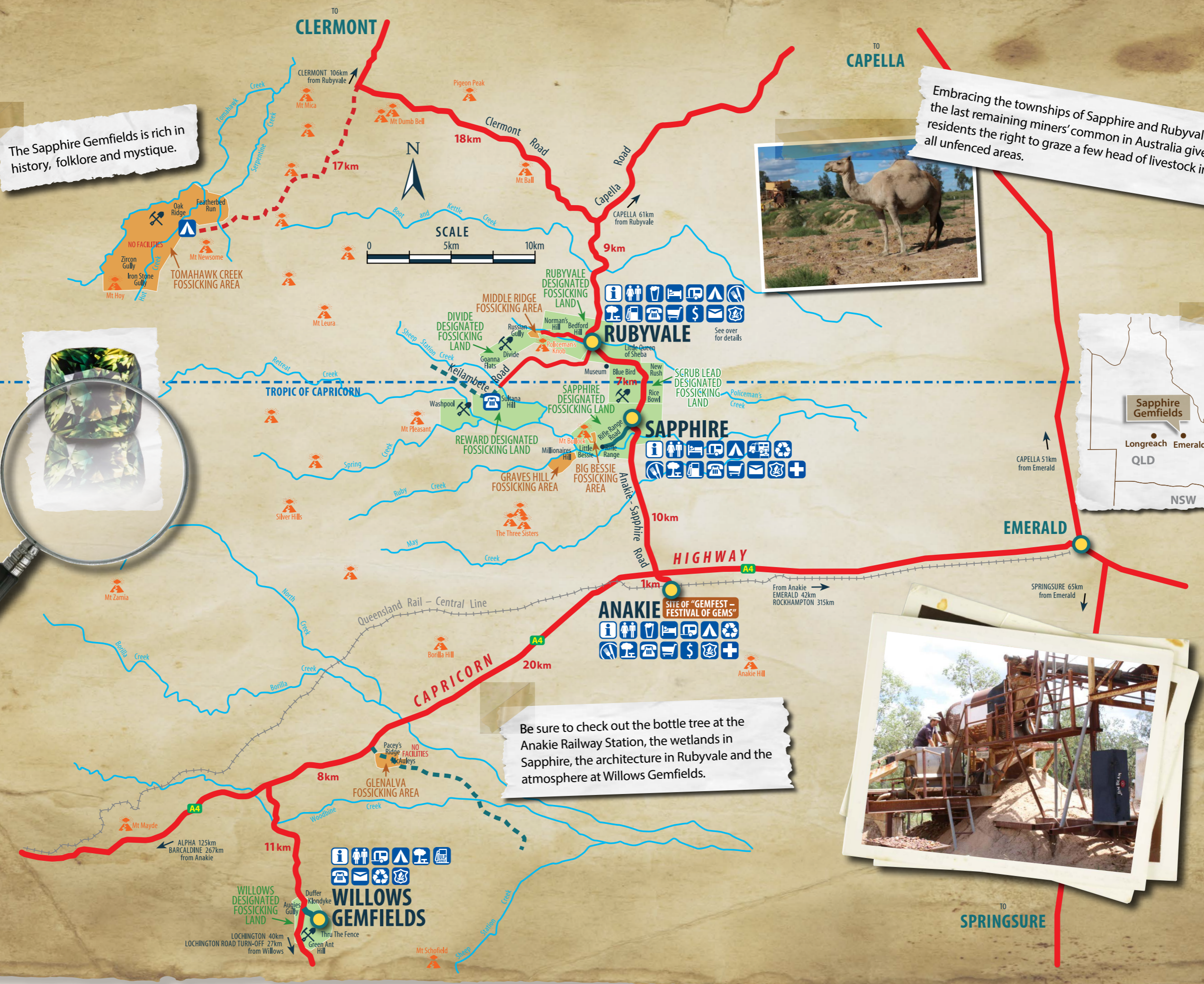
LOCAL MAPS FEATURING

RUBYVALE
SAPPHIRE
ANAKIE
WILLOWS GEMFIELDS
TOMAHAWK CREEK
GLENALVA



The Sapphire Gemfields is rich in history, folklore and mystique.

Embracing the townships of Sapphire and Rubyvale, the last remaining miners' common in Australia gives residents the right to graze a few head of livestock in all unfenced areas.



Be sure to check out the bottle tree at the Anakie Railway Station, the wetlands in Sapphire, the architecture in Rubyvale and the atmosphere at Willows Gemfields.

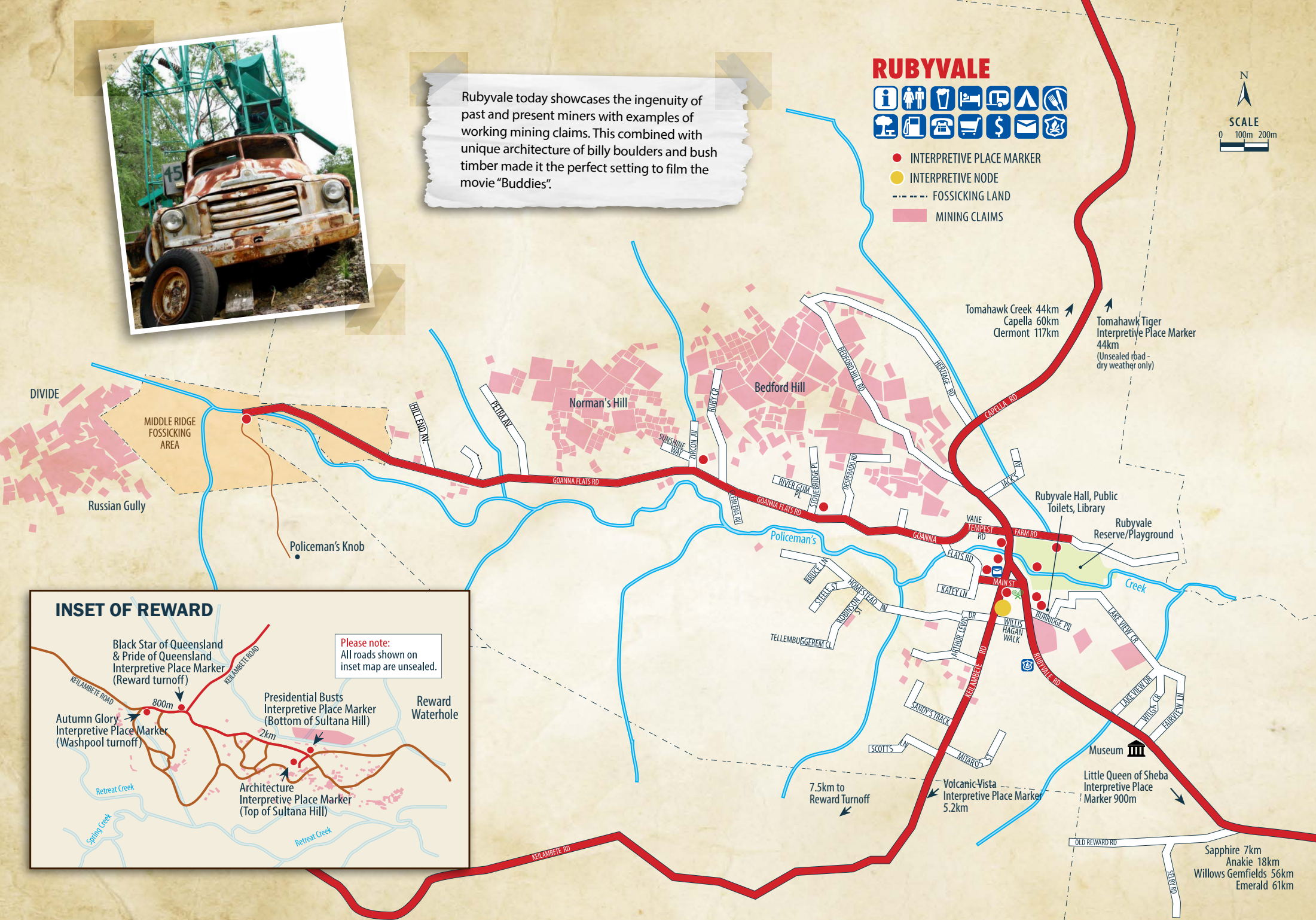


Rubyvale today showcases the ingenuity of past and present miners with examples of working mining claims. This combined with unique architecture of billy boulders and bush timber made it the perfect setting to film the movie "Buddies".

RUBYVALE



- INTERPRETIVE PLACE MARKER
- INTERPRETIVE NODE
- FOSSICKING LAND
- MINING CLAIMS



DIVIDE
MIDDLE RIDGE FOSSICKING AREA
Russian Gully
Policeman's Knob

INSET OF REWARD

Please note:
All roads shown on inset map are unsealed.

- Black Star of Queensland & Pride of Queensland Interpretive Place Marker (Reward turnoff)
- Autumn Glory Interpretive Place Marker (Washpool turnoff)
- Presidential Busts Interpretive Place Marker (Bottom of Sultana Hill)
- Architecture Interpretive Place Marker (Top of Sultana Hill)
- Reward Waterhole

Distances: 800m, 2km

Tomahawk Creek 44km
Capella 60km
Clermont 117km
Tomahawk Tiger Interpretive Place Marker 44km (Unsealed road - dry weather only)

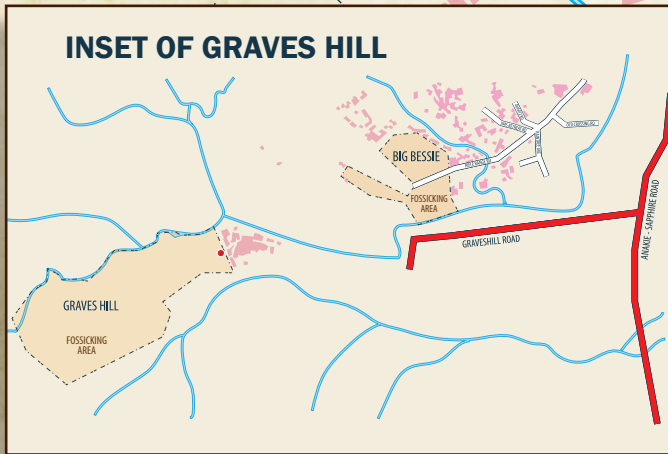
Sapphire 7km
Anakie 18km
Willows Gemfields 56km
Emerald 61km

Since the discovery of sapphires in Retreat Creek in the 1870s, Sapphire continues to be a popular fossicking area, as well as the service hub to the Sapphire Gemfields. The recently developed wetland reserve is a must visit for nature lovers.



Mount Bullock

INSET OF GRAVES HILL



Graves Hill

The Bullock Holes

SAPPHIRE



- INTERPRETIVE PLACE MARKER
- INTERPRETIVE NODE
- - - FOSSICKING LAND
- MINING CLAIMS



Tropic of Capricorn and Boom & Bust - Machinery Mining Interpretive Place Markers 1.5km

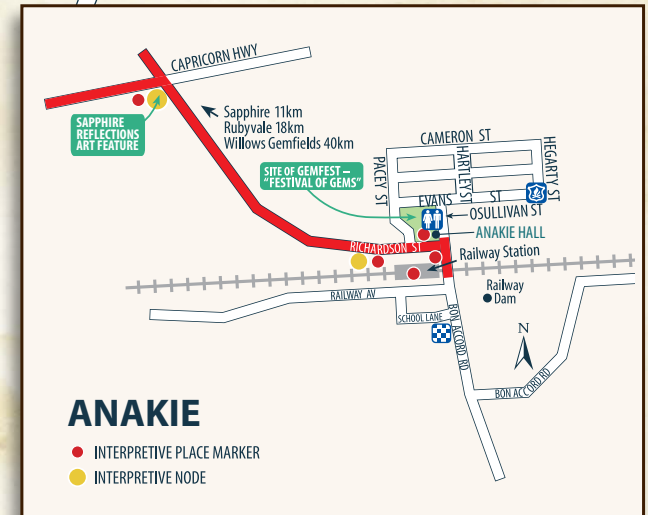
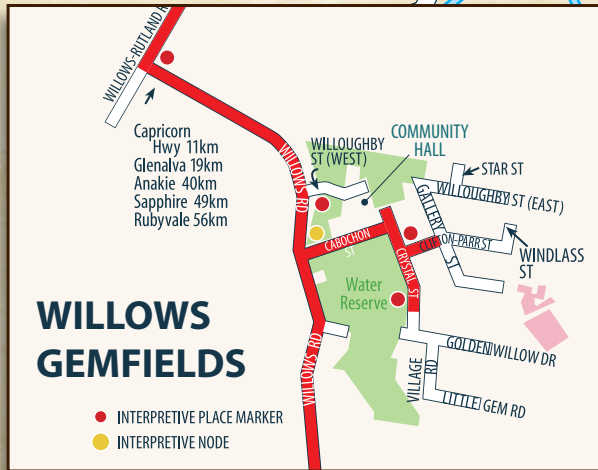
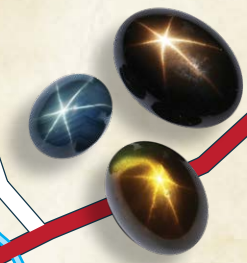
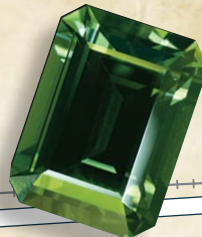
Rubyvale 6km

Anakie 11km
 Glenalva 30km
 Willows Gemfields 49km
 Emerald 54km
 "Piano Tuner's Grave" Interpretive Place Marker 2.5km



WILLOWS GEMFIELDS

Many famous stones have been unearthed from the relatively small mining areas of Glenalva and Willows Gemfields.



ANAKIE



- INTERPRETIVE PLACE MARKER
- INTERPRETIVE NODE
- FOSSICKING LAND
- MINING CLAIMS



ANAKIE

Home to "Sapphire Reflections", our signature art feature, Anakie will always be the gateway to the Sapphire Gemfields, hosting Gemfest – "Festival of Gems" each August.



WILLOWS GEMFIELDS



ULP ONLY

SAPPHIRE GEMFIELDS TREASURE TRAIL



SPARKLING SAPPHIRES · CURIOUS CHARACTERS · TALES TALL BUT TRUE · FULL ON FAMILY FUN

Get out and about and enjoy a day or a week of discovery when you begin your own treasure hunt on Central Queensland's latest innovative tourist trail. Visitors can take themselves on a historic journey through the four townships of Queensland's Sapphire Gemfields; one of the largest in the southern hemisphere.

Starting at the Anakie crossroads, you will stand in awe under the eye-catching, 'Sapphire Reflections'. This signature art piece stands over 12 metres tall and reflects all the colours of the local sapphires.

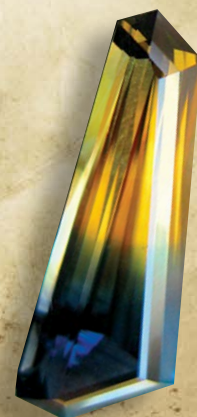
The trail takes visitors to a series of five large interpretive nodes across Anakie, Sapphire, Rubyvale and Willows Gemfields. From these nodes, you can follow local maps to another 30 place markers scattered throughout the region at points of interest.

The trail includes interactive applications such as augmented reality and geo-cache activities. With your smartphone or device you can unlock the fascinating stories of this intriguing part of the world. Download the app as directed and follow "centralhighlandsqld" to access these informative and innovative features.

Solar powered audio posts along the trail will allow you to immerse yourself in life on the 'Fields.

We invite you to stay awhile, base yourself in Anakie, Willows Gemfields, Sapphire or Rubyvale as you make your way along the Sapphire Gemfields Treasure Trail. You never know, you could stub your toe on a fortune.

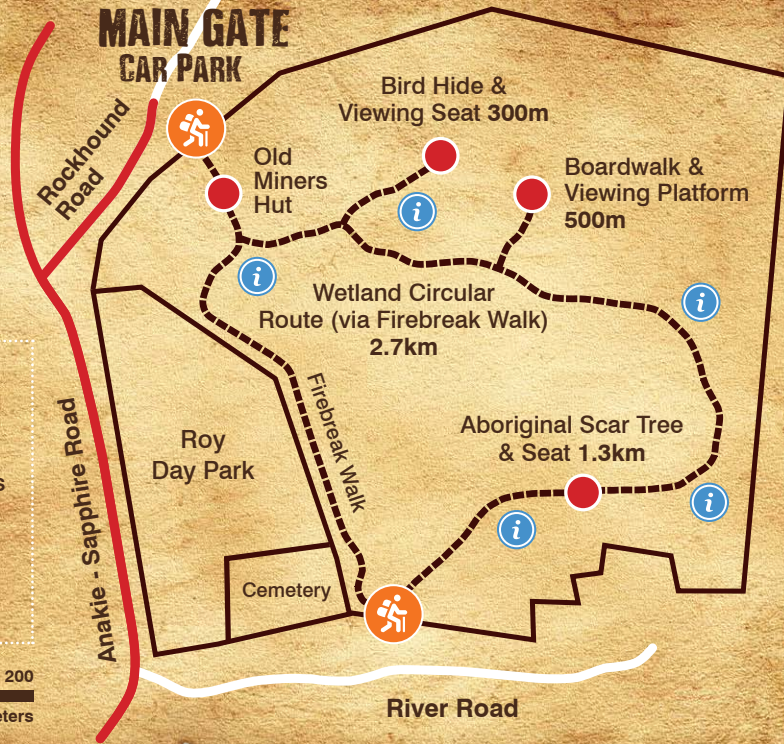
The Sapphire Gemfields Interpretive Trail, as part of the Dig the Tropic geo-tourism trail, was funded by the Central Highlands Regional Council and the Australian Government's Tourism Demand Driver Infrastructure (TDDI) Program, administered by the Queensland Government's Department of Tourism, Major Events, Small Business and the Commonwealth Games.



SAPPHIRE GEMFIELDS WETLAND RESERVE

LEGEND

- Wetland Landmarks
 - ⚠ Trail Entrance/Exit Gates
 - i Wetland Information
 - Walking Trail
- Distances from the Main Gate*



SAPPHIRE GEMFIELDS WETLAND RESERVE

Established in 2012, the Sapphire Gemfields Wetland Reserve protects this sensitive area, providing refuge to native animals and three very special invertebrates – the fairy shrimp, tadpole shrimp and clam shrimp.

Walking trails ranging from a short 300 metre stroll to a 3.8 kilometre trek wind through 95 hectares of Coolibah, Brigalow and Poplar box trees.

The wetland is seasonal. If you visit after rain you will be greeted by an abundance of plant, invertebrate and bird life. When dry, the wetland area provides a tranquil spot to sit and relax while gazing out at the large Coolibah trees and wildlife taking advantage of the changed environment.

Getting there: Follow Rockhound Road in Sapphire to the carpark. (GPS Co-ordinates: -23.46140, 147.72861)

EXPLORING THE RESERVE

- Locally-crafted iron gates lead to an abandoned miner's hut.
- A camouflaged bird-hide is perfect for observing and photographing the prolific birdlife, including the elegant brolga.
- The 40 metre boardwalk/viewing platform allows quiet viewing of shrimp, freshwater crabs and inland yabbies in the wet season. The dry season offers the adventurer a variety of plant species and wildlife to view.
- Interpretive signage gives information on the diverse range of fauna and flora. Eastern grey kangaroos are frequent visitors as are native birds, reptiles, snakes and marsupials so keep your eyes open.
- The scar tree is a reminder of the area's indigenous heritage and can be seen from a resting seat along the 2.7 kilometre circular walking track.



WHAT YOU NEED TO BRING

Make sure that you have plenty of water to drink, sunscreen, light clothing and a hat.

A camera is always handy and good comfortable walking shoes are advised.

ENJOY!